

# WHEREVER I LAY MY HAT

(That's My Home)

From The 1983 Album "NO PARLEZ" (Extended Version)

Bass Part by Pino Palladino  
Transcription: Manfred Sauer

Paul Young  
Written By M. Gaye, B.Strong, N.Whitfield

**Intro** ♩=89

**Verse I**

**Chorus I**

**Verse II**

**Chorus II**



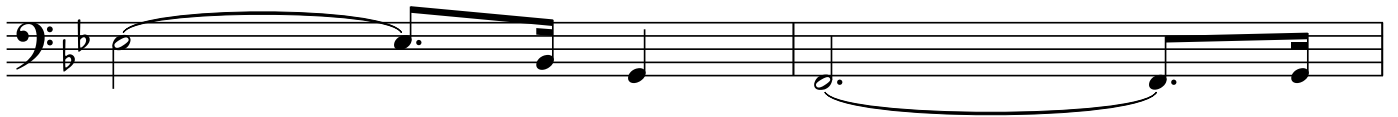
**Bridge**



**Verse III**



**Chorus III**



Outro

The musical score for the 'Outro' section consists of ten staves of bass clef notation in B-flat major. The music features a rhythmic pattern of eighth and sixteenth notes with various articulations like accents and slurs. The notation includes many 'x' marks above notes, likely indicating fingerings or specific articulations. The piece concludes with a final melodic flourish on the tenth staff.



The image displays ten staves of musical notation, all in bass clef, B-flat major, and 3/4 time. The notation is complex, featuring a variety of rhythmic patterns, including eighth and sixteenth notes, rests, and accidentals. The first staff begins with a treble clef and a key signature change to B-flat major. The notation includes many slurs, ties, and dynamic markings, suggesting a piece of music with intricate phrasing and articulation. The staves are arranged vertically, with each staff containing a single line of music.



The image displays six staves of musical notation in bass clef, with a key signature of two flats (B-flat and E-flat). The notation is complex, featuring various rhythmic patterns, slurs, and asterisks marking specific notes. The first staff begins with a series of eighth notes, followed by a slur over a group of notes. The second staff continues with similar rhythmic patterns, including a triplet of eighth notes. The third staff shows a mix of eighth and sixteenth notes, with a slur over a group of notes. The fourth staff features a more intricate rhythmic pattern with many sixteenth notes. The fifth staff continues with similar rhythmic patterns, including a slur over a group of notes. The sixth staff concludes the piece with a final cadence, including a double bar line.

